

# SUCS Lightning Talks: Bertrand Russell

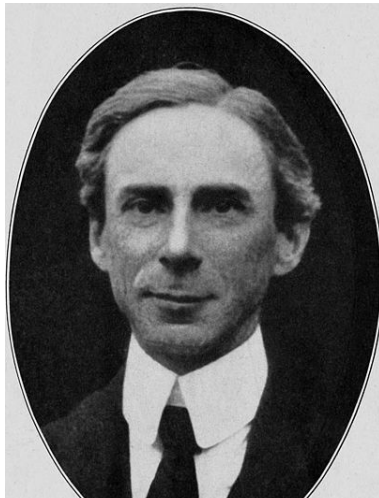
Rhodri Curnow (Mistake)

November 1, 2011

- ▶ These slides will be made available at <http://www.sucs.org/mistake/Talks/Sucs/>

SUCS Lightning Talks: Bertrand Russell

Areas Influenced  
People Influenced  
Political Views  
Important Works  
Russell's Paradox  
Russell's Teapot  
Acknowledgements  
Any Questions




- ▶ Full Name: Bertrand Arther William Russell, 3rd Earl Russell
- ▶ Born: 18th May 1872, Tellech, Monmouthshire
- ▶ Died: 2 February 1970, Penrhyndeudraeth, Gwynedd
- ▶ Interests:
  - ▶ Philosophy
  - ▶ Metaphysics
  - ▶ Logic
  - ▶ Mathematics
  - ▶ Ethics

- ▶ Logic
- ▶ Mathematics
  - ▶ Set Theory
- ▶ Computer Science
- ▶ Philosophy


- ▶ Ludwig Wittgenstein - Authored one of the most important books of 20th-century philosophy<sup>2</sup>

---

<sup>2</sup>Douglas P. Lackey - "What Are the Modern Classics? The Baruch Poll of Great Philosophy in the Twentieth Century" 


- ▶ Ludwig Wittgenstein - Authored one of the most important books of 20th-century philosophy<sup>2</sup>
- ▶ Kurt Gödel - Developed the two "Gödel incompleteness theorems"

---

<sup>2</sup>Douglas P. Lackey - "What Are the Modern Classics? The Baruch Poll of Great Philosophy in the Twentieth Century" 

- ▶ Ludwig Wittgenstein - Authored one of the most important books of 20th-century philosophy<sup>2</sup>
- ▶ Kurt Gödel - Developed the two "Gödel incompleteness theorems"
- ▶ Alan Turing - Halting Problem, Turing Machines, Breaking Enigma Codes . . .

---

<sup>2</sup>Douglas P. Lackey - "What Are the Modern Classics? The Baruch Poll of Great Philosophy in the Twentieth Century" 



- ▶ Convicted under the Defense of the Realm Act in 1916 for Pacifism
- ▶ Anti re-armament before World War II, changed his opinion during the course of the war to accept War as a necessary evil<sup>3</sup>
- ▶ Campaigned against involvement in Vietnam
- ▶ Campaigned for Nuclear Disarmament

---

<sup>3</sup>Under extreme circumstances, which came to be known as "Relative Political Pacifism"

- ▶ Principia Mathematica (co-authored with Alfred Whitehead)
  - ▶ An attempt to ground Mathematics in logic
- ▶ Russell's Paradox
  - ▶ A paradox discovered in Cantor's original idea of Set Theory
- ▶ Russell's Teapot
  - ▶ Russell's reasoning behind his Atheism
- ▶ Logical Atomism
  - ▶ A development of Analytic philosophy

- ▶ Three volume work looking at the foundations of Mathematics
- ▶ Volumes published in 1910, 1912 and 1913
- ▶ 2nd Edition published in 1927
- ▶ An attempt to derive all Mathematical truths from a defined set of axioms and inference rules

- ▶ More commonly known as the Barber Paradox
- ▶ The barber shaves only those men in the town who do not shave themselves.
- ▶ So... who shaves the barber?

- ▶ More commonly known as the Barber Paradox
- ▶ The barber shaves only those men in the town who do not shave themselves.
- ▶ So... who shaves the barber?
- ▶ Let  $R$  be the set of all sets that are not members of themselves. If  $R$  qualifies as a member of itself, then it contradicts its own definition. On the other hand, if it is not a member of itself, it qualifies as a member of itself using the same definition.

- ▶ More commonly known as the Barber Paradox
- ▶ The barber shaves only those men in the town who do not shave themselves.
- ▶ So... who shaves the barber?
- ▶ Let  $R$  be the set of all sets that are not members of themselves. If  $R$  qualifies as a member of itself, then it contradicts its own definition. On the other hand, if it is not a member of itself, it qualifies as a member of itself using the same definition.
- ▶  $R = \{x \mid x \notin x\}$  then  $R \in R \iff R \notin R$

- ▶ Used by Russell to illustrate the idea of "*philosophic burden of proof*" caused by someone making a claim that is scientifically un-proveable

*If I were to suggest that between the Earth and Mars there is a china teapot revolving about the sun in an elliptical orbit, nobody would be able to disprove my assertion provided I were careful to add that the teapot is too small to be revealed even by our most powerful telescopes. But if I were to go on to say that, since my assertion cannot be disproved, it is intolerable presumption on the part of human reason to doubt it, I should rightly be thought to be talking nonsense.<sup>4</sup>*

---

<sup>4</sup>Bertrand Russell - "Is there a god"

[http://www.cfpf.org.uk/articles/religion/br/br\\_god.html](http://www.cfpf.org.uk/articles/religion/br/br_god.html)



- ▶ Logicomix: An Epic Search for the Truth<sup>5</sup> - For getting me interested in who Bertand Russell was
- ▶ The Internet - For filling out the information/ background etc

---

<sup>5</sup><http://www.logicomix.com/en/>

## SUCS Lightning Talks: Bertrand Russell

Areas Influenced  
People Influenced  
Political Views  
Important Works  
Important Works  
Russell's Paradox  
Russell's Teapot  
Acknowledgements  
**Any Questions**